

Breathing Mode Ambient Light Installation



Breathing Mode Ambient Light Kit



Remove the electroplated parts of the door and remove the T30 door screws



Pry up the side latch with a plastic pry tool

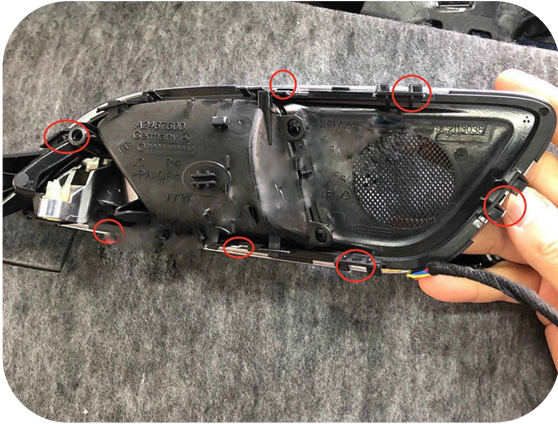


Remove door plating frame

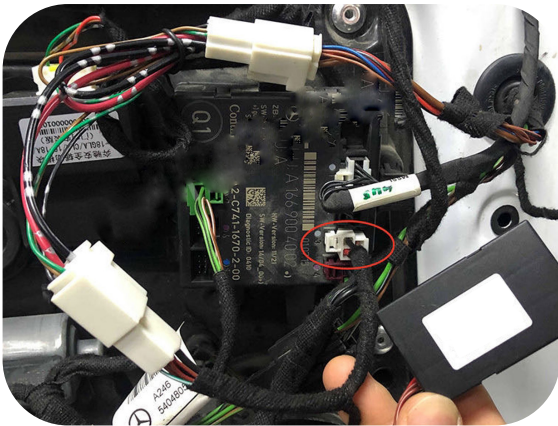
Breathing Mode Ambient Light Installation



Replace door frame mood lights with light strips



Pay attention to the clips location



The ambient light module is connected to the left front door computer 3# plug

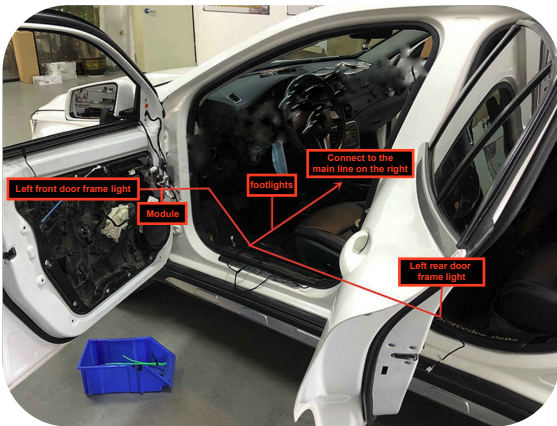


Door Ambient light plug-in

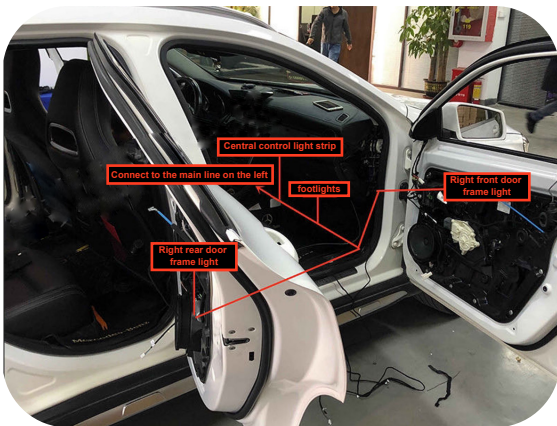
Breathing Mode Ambient Light Installation



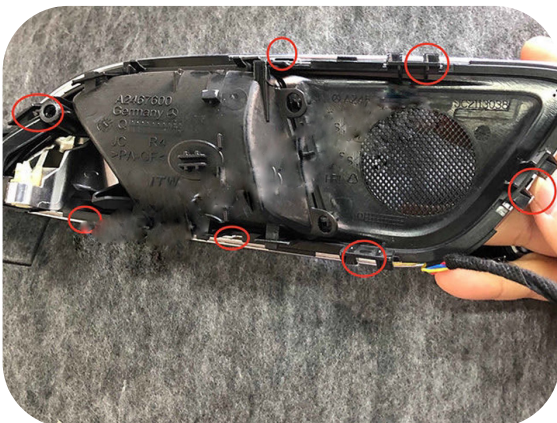
Rear door Ambient light B threading
(just insert the wire by matching the colors)



Left side routing



Right side routing



Clips location

Breathing Mode Ambient Light Installation



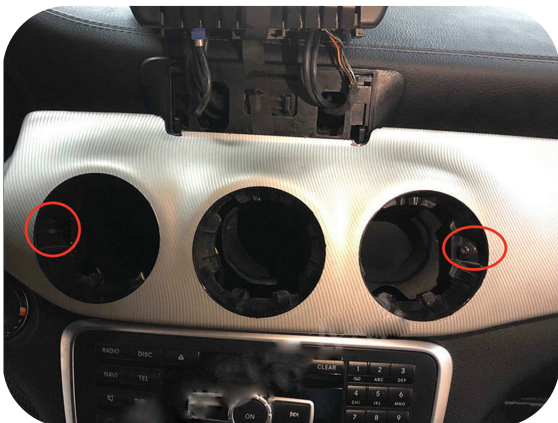
Use the hook to pull out all the air vents



This is the hook position



Remove the screen screws and remove the screen

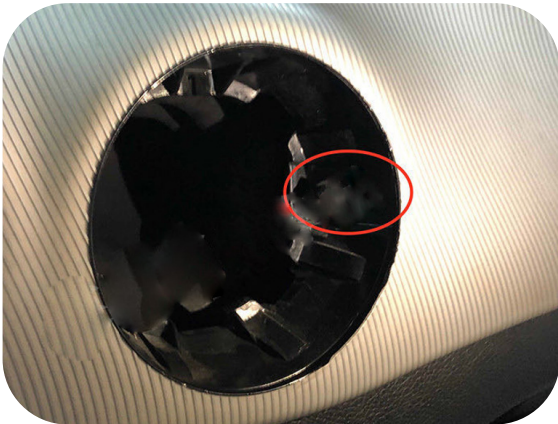


The center control panel has screws and clips

Breathing Mode Ambient Light Installation



The button position of the air vent on the left side of the central console



Remove the air vent screw on the right side of the center console

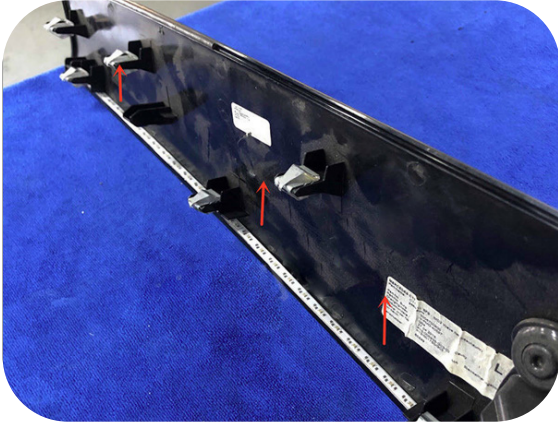


Slowly pry up the center control panel from right to left



Install the LED light strip first

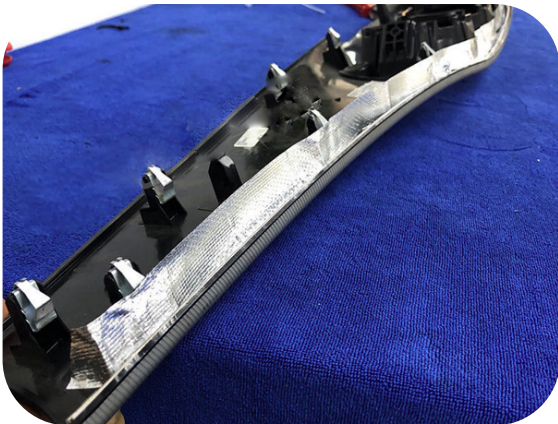
Breathing Mode Ambient Light Installation



Install central control LED light strip pointing upwards



Details: LED Light upward



Installed centre control reflective paper



Installation guide of centre control reflective paper